

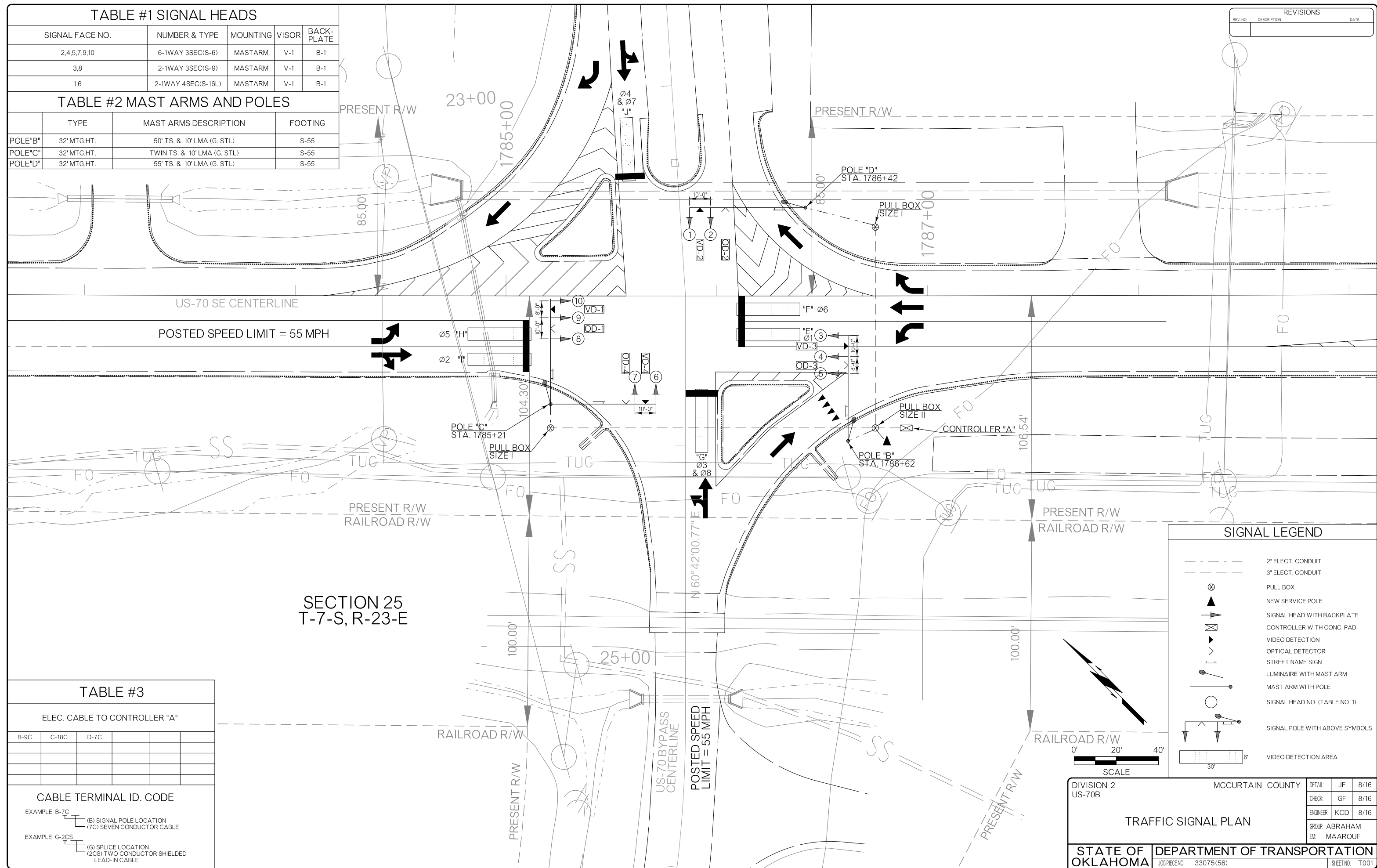
REVISIONS		
REV. NO.	DESCRIPTION	DATE

TABLE #1 SIGNAL HEADS

SIGNAL FACE NO.	NUMBER & TYPE	MOUNTING	VISOR	BACK-PLATE
2,4,5,7,9,10	6-1WAY 3SEC(S-6)	MASTARM	V-1	B-1
3,8	2-1WAY 3SEC(S-9)	MASTARM	V-1	B-1
1,6	2-1WAY 4SEC(S-16L)	MASTARM	V-1	B-1

TABLE #2 MAST ARMS AND POLES

TYPE	MAST ARMS DESCRIPTION	FOOTING
POLE"B"	32' MTG.HT. 50' TS. & 10' LMA (G. STL)	S-55
POLE"C"	32' MTG.HT. TWIN TS. & 10' LMA (G. STL)	S-55
POLE"D"	32' MTG.HT. 55' TS. & 10' LMA (G. STL)	S-55



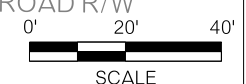
US-70 SE CENTERLINE
POSTED SPEED LIMIT = 55 MPH

SECTION 25
T-7-S, R-23-E

POSTED SPEED LIMIT = 55 MPH

SIGNAL LEGEND

- 2" ELECT. CONDUIT
- 3" ELECT. CONDUIT
- ⊗ PULL BOX
- ▲ NEW SERVICE POLE
- ▶ SIGNAL HEAD WITH BACKPLATE
- ⊠ CONTROLLER WITH CONC. PAD
- ▽ VIDEO DETECTION
- ◇ OPTICAL DETECTOR
- ⊥ STREET NAME SIGN
- LUMINAIRE WITH MAST ARM
- ⊥ MAST ARM WITH POLE
- SIGNAL HEAD NO. (TABLE NO. 1)
- ⊥ SIGNAL POLE WITH ABOVE SYMBOLS
- ▭ VIDEO DETECTION AREA



DIVISION 2 US-70B	MCCURTAIN COUNTY	DETAIL: JF 8/16
TRAFFIC SIGNAL PLAN		CHECK: GF 8/16
		ENGINEER: KCD 8/16
GROUP: ABRAHAM EM: MAAROUF		SHEET NO. T001
STATE OF OKLAHOMA	DEPARTMENT OF TRANSPORTATION	JOB/PIECE NO. 33075(56)

TABLE #3

ELEC. CABLE TO CONTROLLER "A"			
B-9C	C-18C	D-7C	

CABLE TERMINAL ID. CODE

EXAMPLE B-7C (B) SIGNAL POLE LOCATION (7C) SEVEN CONDUCTOR CABLE

EXAMPLE G-2CS (G) SPLICE LOCATION (2CS) TWO CONDUCTOR SHIELDED LEAD-IN CABLE